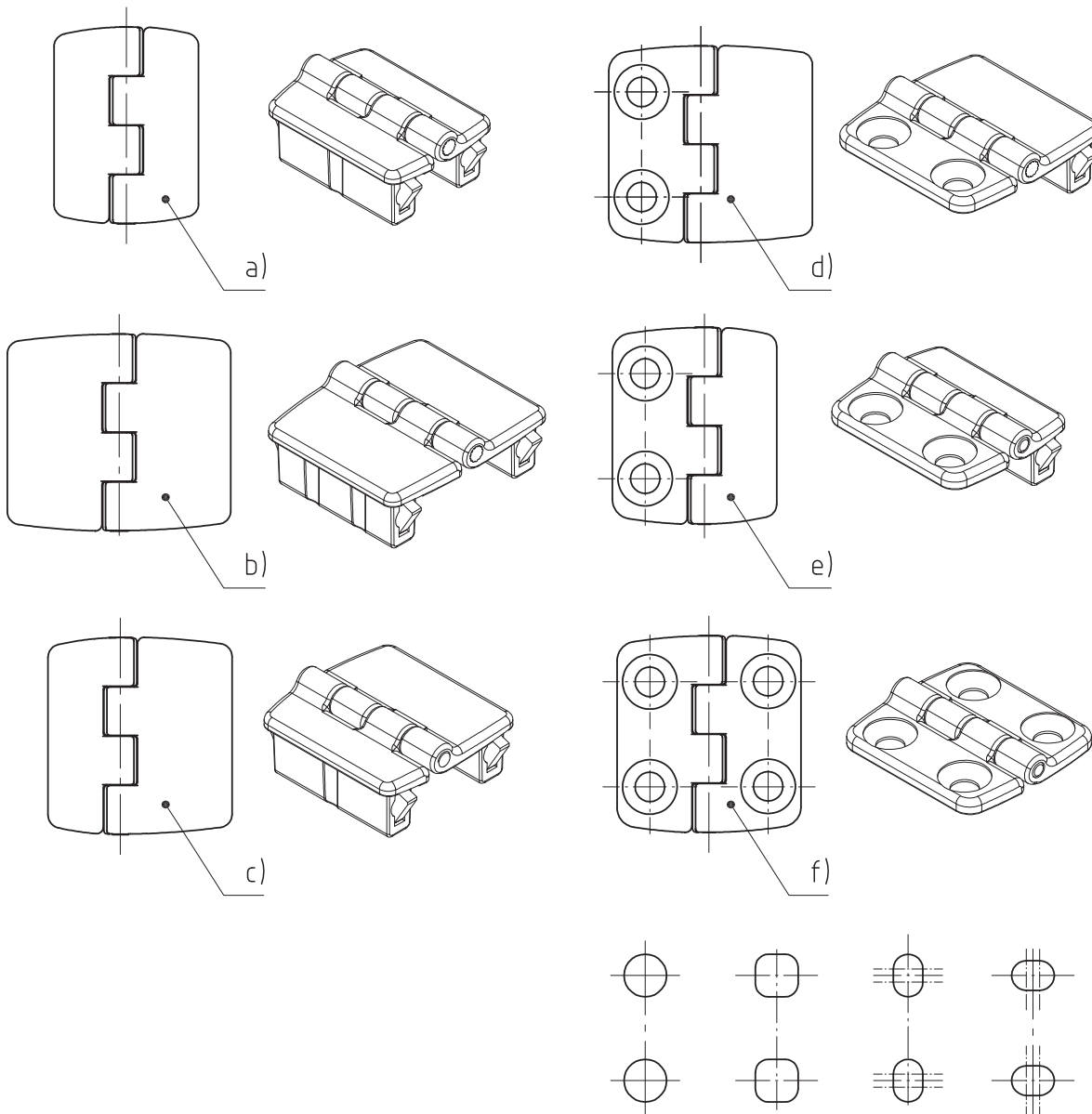


# 4-249SL Series Hinge Combinations SNAP-LINE 180°



Six different combinations are available.

Different Cutouts for adjustment at height and width

	See Page
a) 4-249.01SL Tool-less installation, Nested door, 22mm x 30mm	04.49
b) 4-249.02SL Tool-less installation, Nested door, 34mm x 30mm	04.50
c) 4-249.03SL Tool-less installation, Nested door, One leaf longer, 28mm x 30mm	04.51
d) 4-249.04SL One leaf tool-less installation, Nested door, 31mm x 30mm	04.52
e) 4-249.05SL One leaf tool-less installation, Nested door, Countersunk holes, 25mm x 30mm	04.53
f) 4-249 Nested door, 28mm x 30mm	04.48

# 4-249.04SL Hinge Pr01 SNAP-LINE 180°

One leaf tool-less installation, Nested door

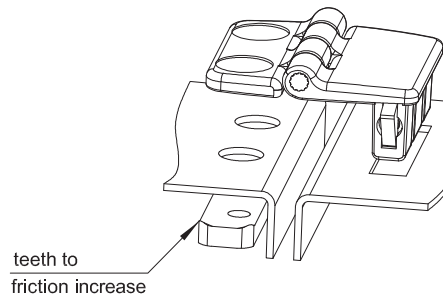
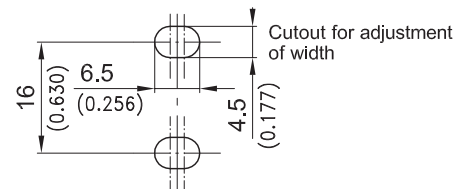
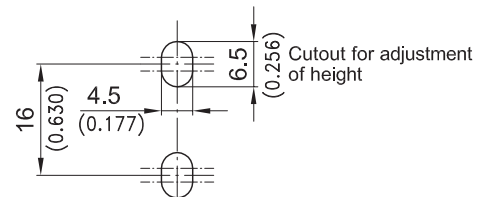
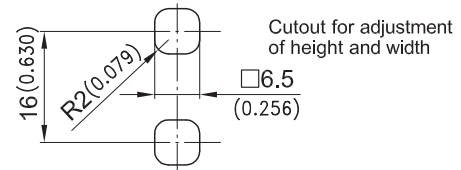
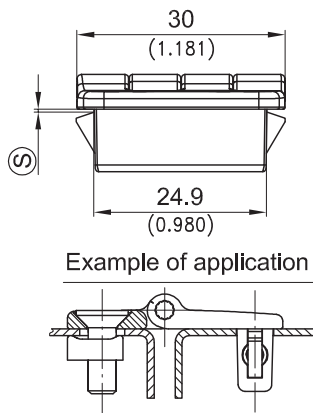
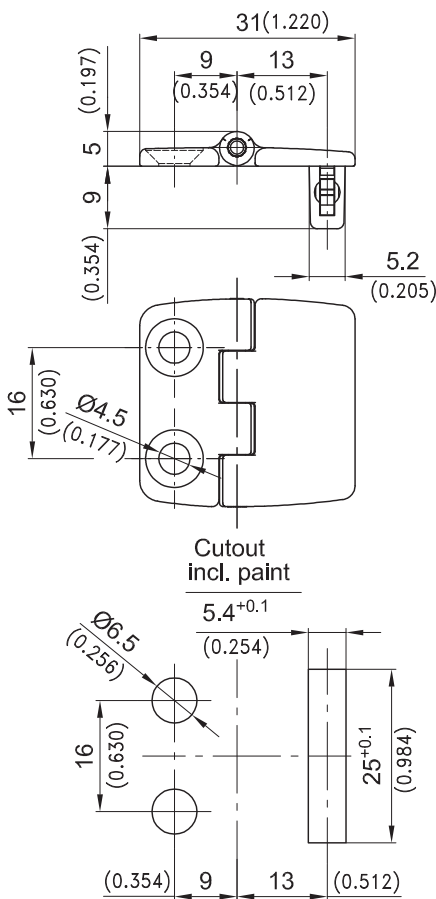
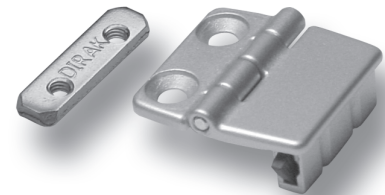


## Product Notes:

- 180° opening angle
- One leaf installed by a simple push into the cutout. Fasten other leaf to panel with screws
- Countersunk screws according DIN 7991 or DIN EN ISO 10642 can be used
- Bore holes allow for adjustments
- Nut plate can be attached to allow adjustment from the front with hinge installed
- Countersunk screws are not included
- Different installation method for leafs - see Product System 4-249 to 4-249.05SL

## Material:

- **Leaves:** Zinc Die, Matt Chrome Plated or Matt Black
- **Pin:** Stainless Steel
- **Wings:** Sintered Steel, Zinc Plated
- **Nut plate:** Steel, Zinc Plated



	Clamping Range <sup>Ⓢ</sup>	Zinc Die Matt Black	Zinc Die Matt Chrome Plated	See Page
<b>180° Hinge</b>	<b>0.6 - 0.9</b>	<b>418-9304.33-00008</b>	<b>418-9304.40-00008</b>	
	<b>0.8 - 1.1</b>	<b>418-9304.33-00010</b>	<b>418-9304.40-00010</b>	
	<b>1.2 - 1.5</b>	<b>418-9304.33-00014</b>	<b>418-9304.40-00014</b>	
	<b>1.8 - 2.1</b>	<b>418-9304.33-00020</b>	<b>418-9304.40-00020</b>	
	<b>2.2 - 2.5</b>	<b>418-9304.33-00024</b>	<b>418-9304.40-00024</b>	
<b>Order nut plate separately</b>		<b>218-0907.15-00000</b>	<b>218-0907.15-00000</b>	
<b>Other <sup>Ⓢ</sup> dimensions on request</b>				
<b>Tool for uninstallation</b>		<b>292-0306.80-02530</b>	<b>292-0306.80-02530</b>	<b>10.17</b>