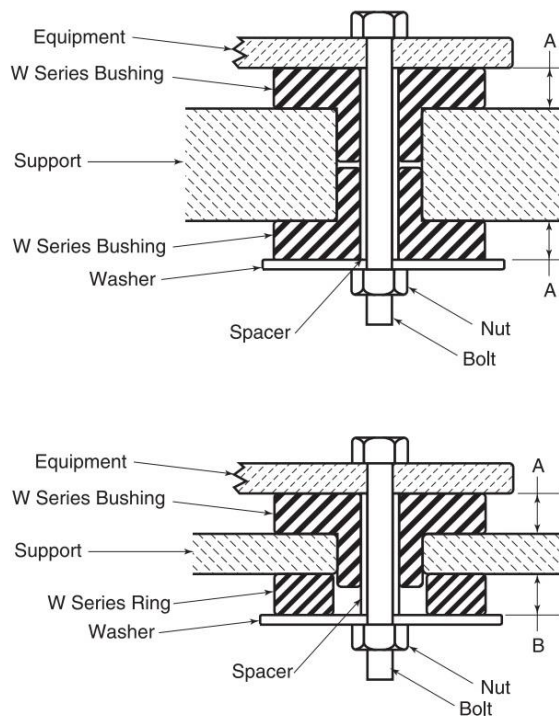


WR/WB Series Mounting Recommendations

Mount Type	Snubbing Washer PN	Washer Dimensions
WR/WB1	BD-0011-B403	OD=1", ID=1/4", W=0.060"
WR/WB3	BD-0011-B404	OD=1.5", ID= 3/8", W=0.070"
WR/WB4	BD-0011-B405	OD=2.2", ID =9/16", W=0.080"
WR/WB6	BD-0011-B406	OD=3.5", ID=5/8", W=0.125"



Installed Dimensions		
	A	B
WR1	-	.23
WB1	.23	-
WR3	-	.30
WB3	.30	-
WR4	-	.45
WB4	.33	-
WR6	-	.75
WB6	1.25	-

Mount Type	Recommended Spacer Size*	Recommended Bolt Size With Spacer	Bolt Size Without Spacer
WR/WB1	OD=1/4", ID=0.1935"	#10-24	#1/4-20
WR/WB3	OD=3/8", ID= 0.0.2570"	#1/4-20	#3/8-16
WR/WB4	OD=9/16", ID =0.3860"	#3/8-16	#9/16-12
WR/WB6	OD=5/8", ID=0.5156"	#1/2-13	#5/8-11

*Spacer length depends on customer application.